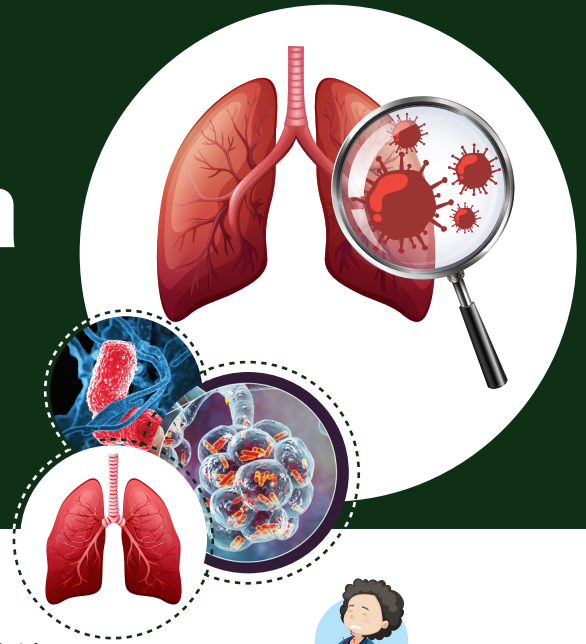


RML's Exclusive Panel

# FilmArray Pneumonia Plus (PNplus) Panel

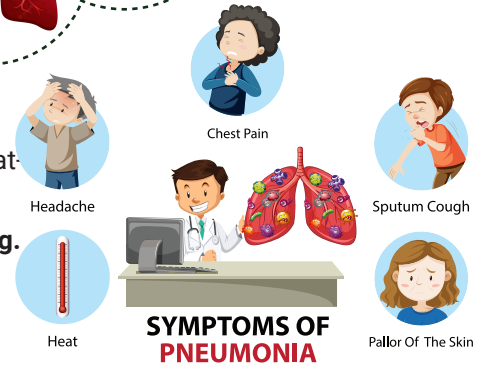


## Know what actually Pneumonia is!

Infection that inflames air sacs in one or both lungs, which may fill with fluid.

With pneumonia, the air sacs may fill with fluid or pus. The infection can be life-threatening to anyone, but particularly to infants, children and people over 65.

**Symptoms include a cough with phlegm or pus, fever, chills and difficulty breathing.**



## Requirement

BAL: (including mini-BAL)

Sputum: (including endotracheal aspirate)

| Bacteria( Semi-Quantitative)  | Atypical Bacteria   | Antimicrobial Resistance Genes   |
|---|---|--|
| Acinetobacter calcoaceticus-Baumannii complex<br>Bacteroides fragilis<br>Enterobacter cloacae complex<br>Escherichia coli<br>Klebsiella aerogenes<br>Klebsiella oxytoca<br>Klebsiella pneumoniae group<br>Moraxella catarrhalis<br>Proteus spp.<br>Serratia marcescens<br>Haemophilus influenzae<br>Pseudomonas aeruginosa<br>Staphylococcus aureus<br>Streptococcus pneumoniae<br>Streptococcus pyogenes | Chlamydia pneumoniae<br>Legionella pneumophila<br>Mycoplasma pneumoniae<br><br><b>Viruses</b><br>Adenovirus<br>Coronavirus<br>Human metapneumovirus<br>Human rhinovirus/ enterivirus<br>Influenza A Virus<br>Influenza B Virus<br>Middle East respiratory Syndrome<br>Coronavirus(MERS-CoV)<br>Parainfluenza Virus<br>Respiratory Syncytial Virus | <b>Carbapenemases</b><br>IMP<br>KPC<br>OXA-48-like<br>NDM<br>VIM<br><br><b>ESBL</b><br>CTX-M<br><br><b>Methicillin Resistance</b><br>mecA/C and MREJ(MRSA) |

**34**  
**Targets**  
**24 hr**

⬇️ Fast ⬆️ Accurate Ⓜ️ Comprehensive

## Performance

|            |                          |                          |               |                          |                          |
|------------|--------------------------|--------------------------|---------------|--------------------------|--------------------------|
| <b>BAL</b> | <b>96.2%</b> Sensitivity | <b>98.3%</b> Specificity | <b>Sputum</b> | <b>96.3%</b> Sensitivity | <b>97.2%</b> Specificity |
|            |                          |                          |               |                          |                          |